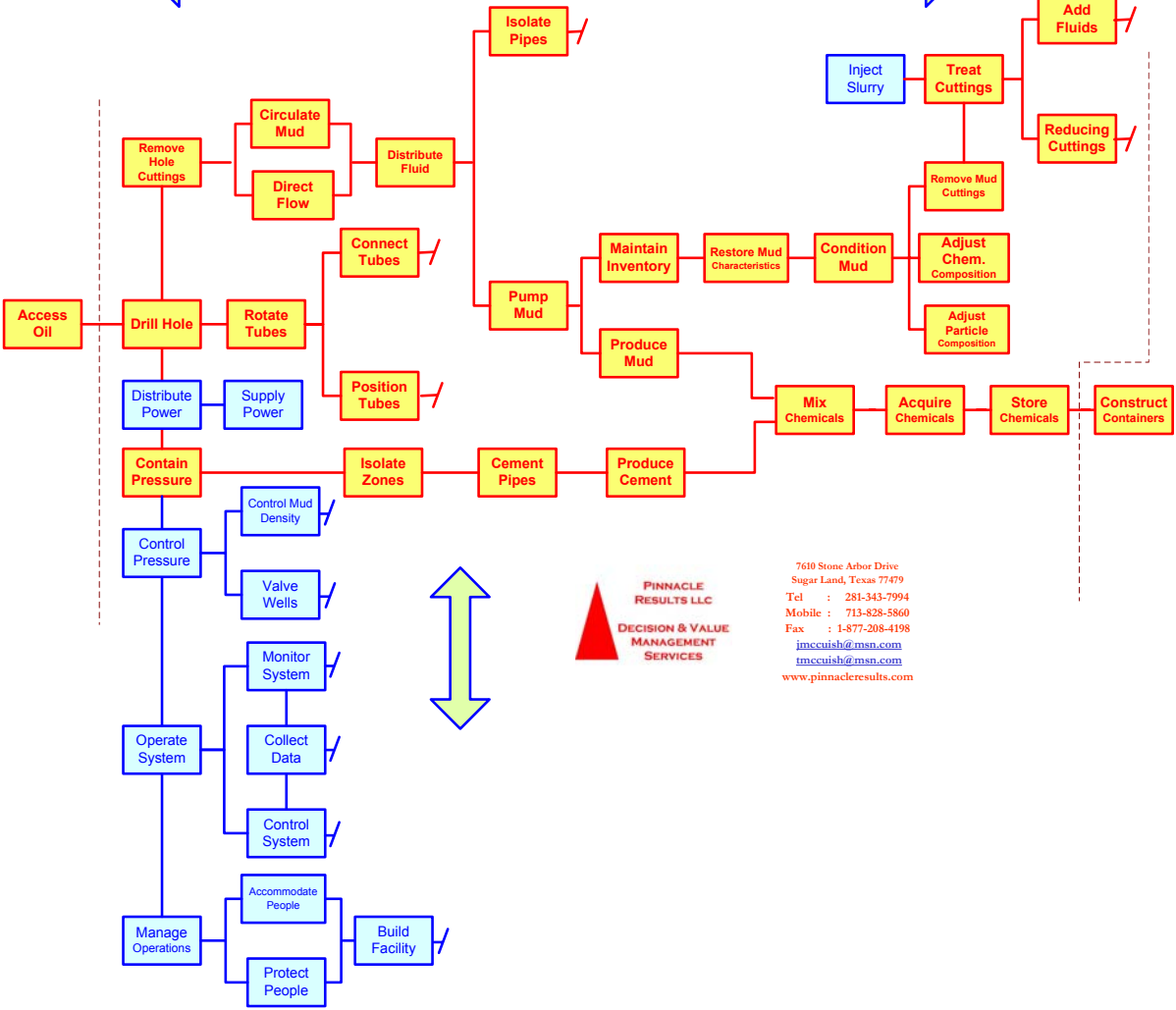




High Level Example Analyses of Function for Production Drilling

← WHY

→ HOW



This example is a High Level introduction to the thinking methods.

When we analyse Oil & Gas Drilling & Production Projects we work in more detail.

The Function Analyses System Technique (FAST) diagram is a graphical depiction of the FUNCTIONS which must be achieved rather than specifying the particular equipment or technology to be used.

As such it is a basis for the team to share the same base understanding for brainstorming.

Additionally the FAST may be "dimensioned" with function "Cost," "Schedule," "Contribution to Waste," etc.

The team then chooses the "High Impact Potential Functions" & Subsystems to concentrate on in the "targeted" brainstorming.

Targeted brainstorming based upon improving delivery of required functions ... without sacrificing Return on Investment is the cornerstone of Value Engineering Theory.

The analyses is normally related to Return on Full Cycle investment rather than simply "cost cutting."

As one looks at this FAST ... we will think about other ways to achieve these functions ... and also other ways to improve the existing equipment utilization!

That will be our task in our VE Study!

PINNACLE RESULTS LLC
DECISION & VALUE MANAGEMENT SERVICES

7610 Stone Arbor Drive
Sugar Land, Texas 77479
Tel : 281-343-7994
Mobile : 713-828-5860
Fax : 1-877-208-4198
jmccuish@msn.com
tmccuish@msn.com
www.pinnacleresults.com